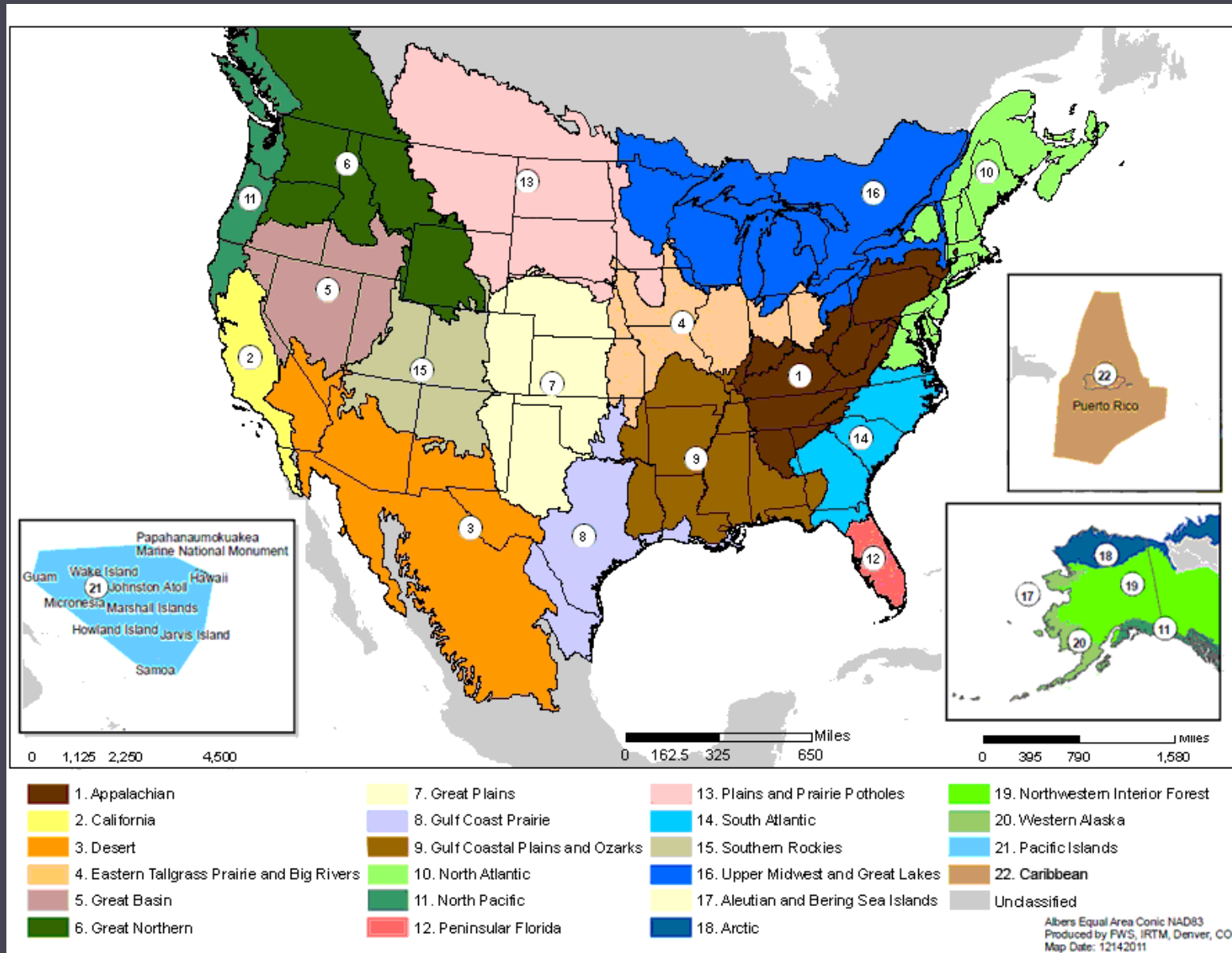


# Alaska's Landscape Conservation Cooperatives (LCCs)



# National LCC Network





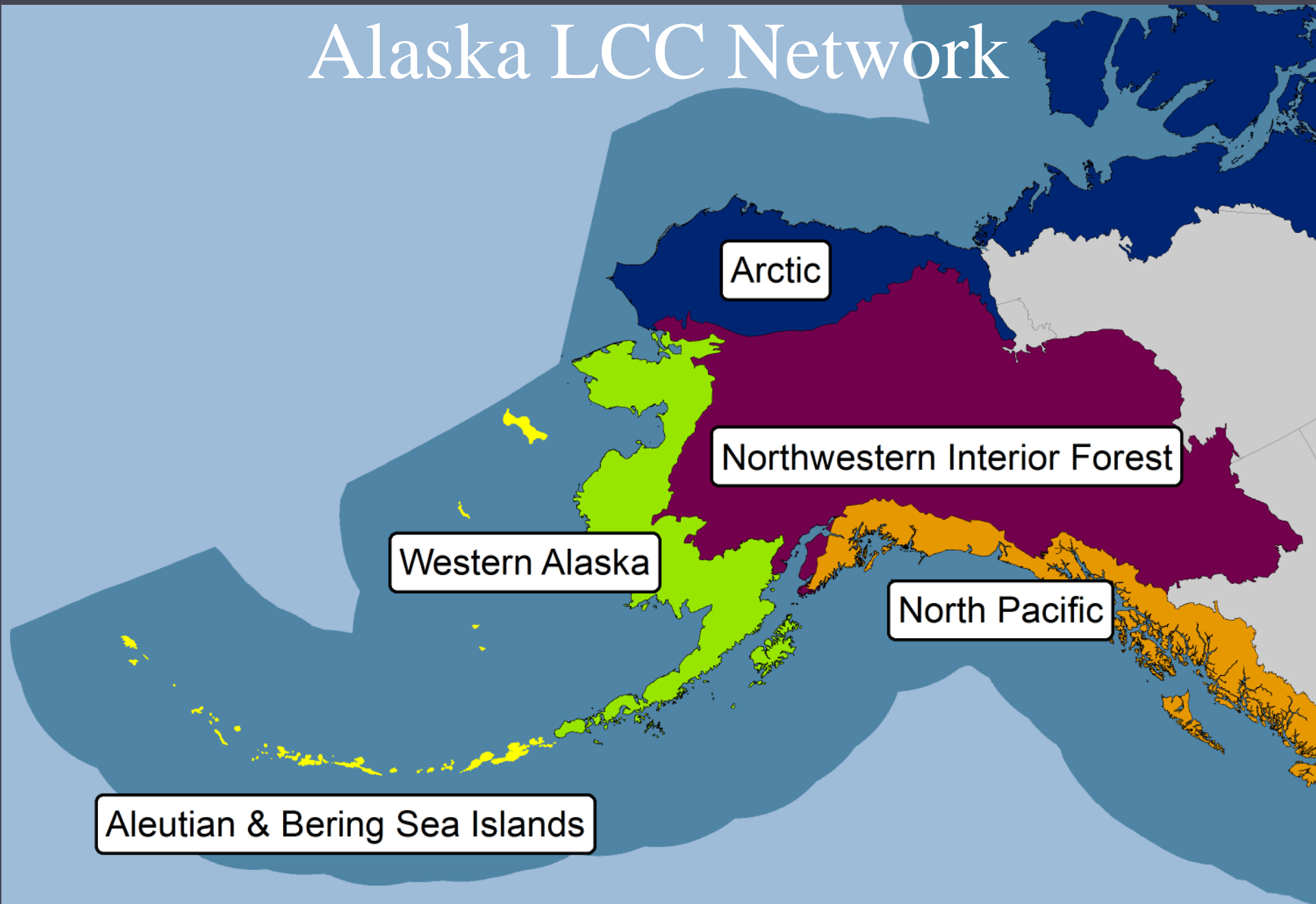
## Department of the Interior Climate Change Strategy Built upon Secretarial Order 3289 (9/14/2009):

- Landscape Conservation Cooperatives (LCCs)
- Climate Science Centers (CSCs)
- NOAA Climate Service
- Association of Fish and Wildlife Agencies and State climate change plans and strategies
- Existing conservation partnerships



LANDSCAPE CONSERVATION  
COOPERATIVES

# Alaska LCC Network



# Alaska LCC Contacts

- **Aleutian and Bering Sea Islands**  
Doug Burn - Coordinator  
Aaron Poe - Science Coordinator
- **Arctic**  
Greg Balogh - Coordinator  
Philip Martin - Science Coordinator
- **North Pacific**  
John Mankowski - Coordinator  
Mary Mahaffy - Science Coordinator
- **Northwestern Interior Forest**  
John DeLapp - Coordinator  
Amanda Robertson - Science Coordinator
- **Western Alaska**  
Karen Murphy - Coordinator  
Joel Reynolds - Science Coordinator
- **State of Alaska - Contacts**  
Doug Vincent-Lang - Acting Director Division of Wildlife Conservation  
Sue Rodman - LCC Program Coordinator

# LCC Model

Federal, State, Local, Tribal Governments  
NGOs, & Private Landowners

Planning, analysis,  
and decision-making



Adaptation needs met:  
changes in policy,  
management, etc.



Monitoring and  
data collection



Development of  
analytic and decision-  
making tools



LCCs

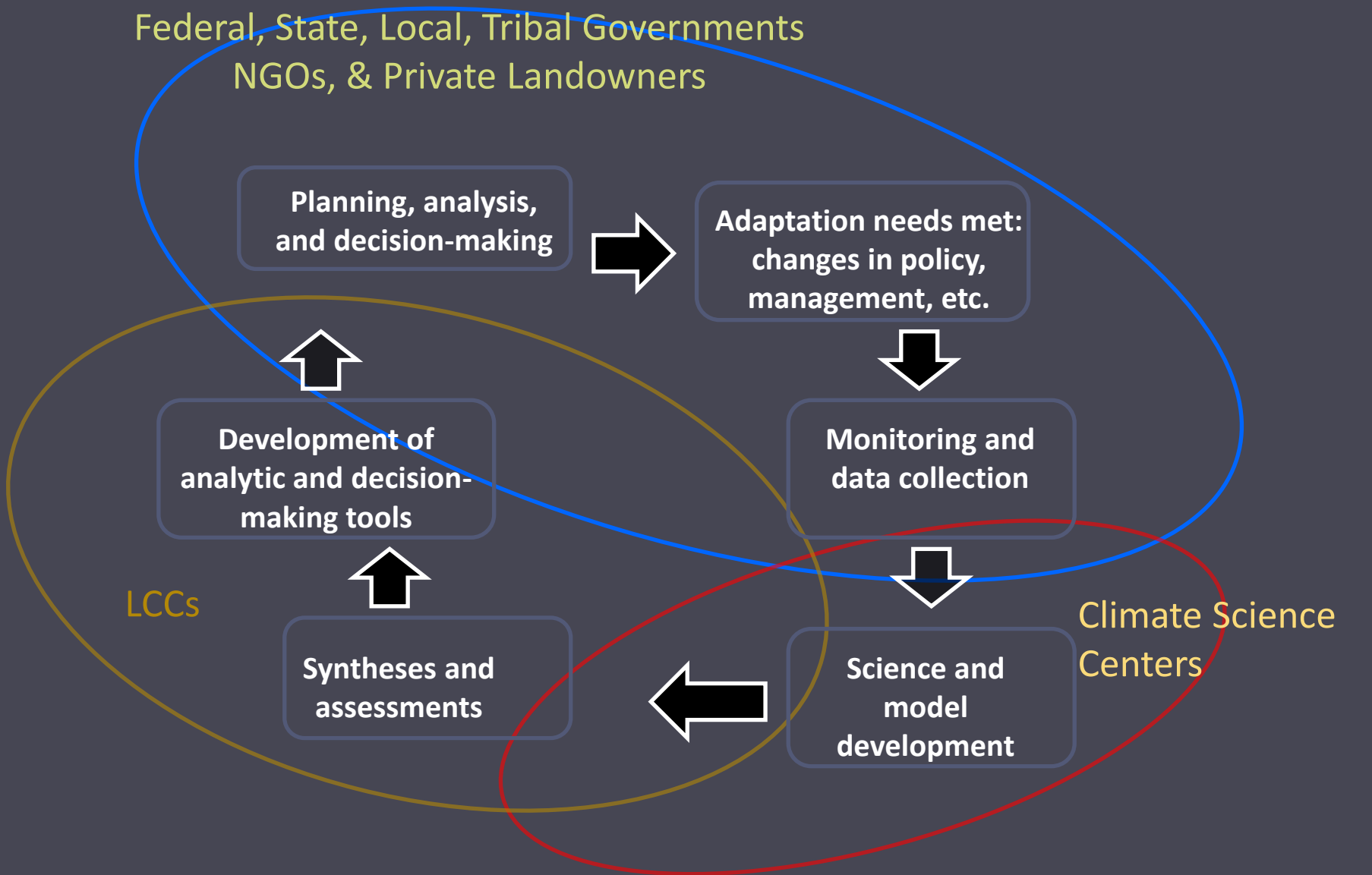


Syntheses and  
assessments



Science and  
model  
development

Climate Science  
Centers



# What LCCs Will Do

- Identify conservation goals and associated science information needs.
- Inform landscape-scale conservation and management decisions.
- Develop improved understanding of habitat and population response to changes in climate and ecosystem processes.



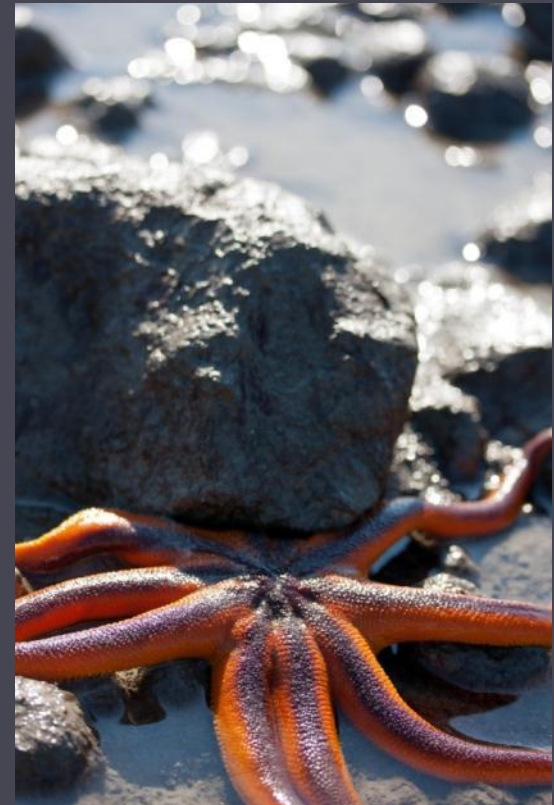
# What LCCs Will NOT Do

- Replace agency responsibilities
- Supersede agency decision making authority
- Initiate Regulatory actions
- Negate value/role of existing partnerships and cooperatives



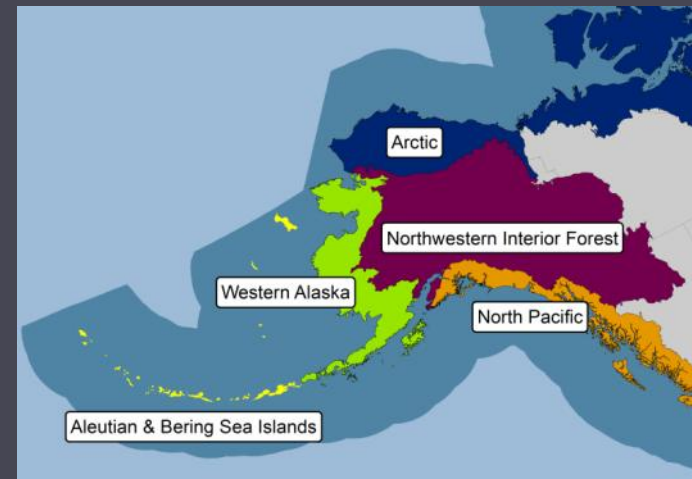
# LCC Structure

- Core staff = LCC Coordinator and Science Coordinator
- Steering Committee
- Partners (e.g., agencies, universities, NGOs, industry)
  - Work groups
  - Science committee
  - Peer reviewers
  - Principal investigators
  - Others



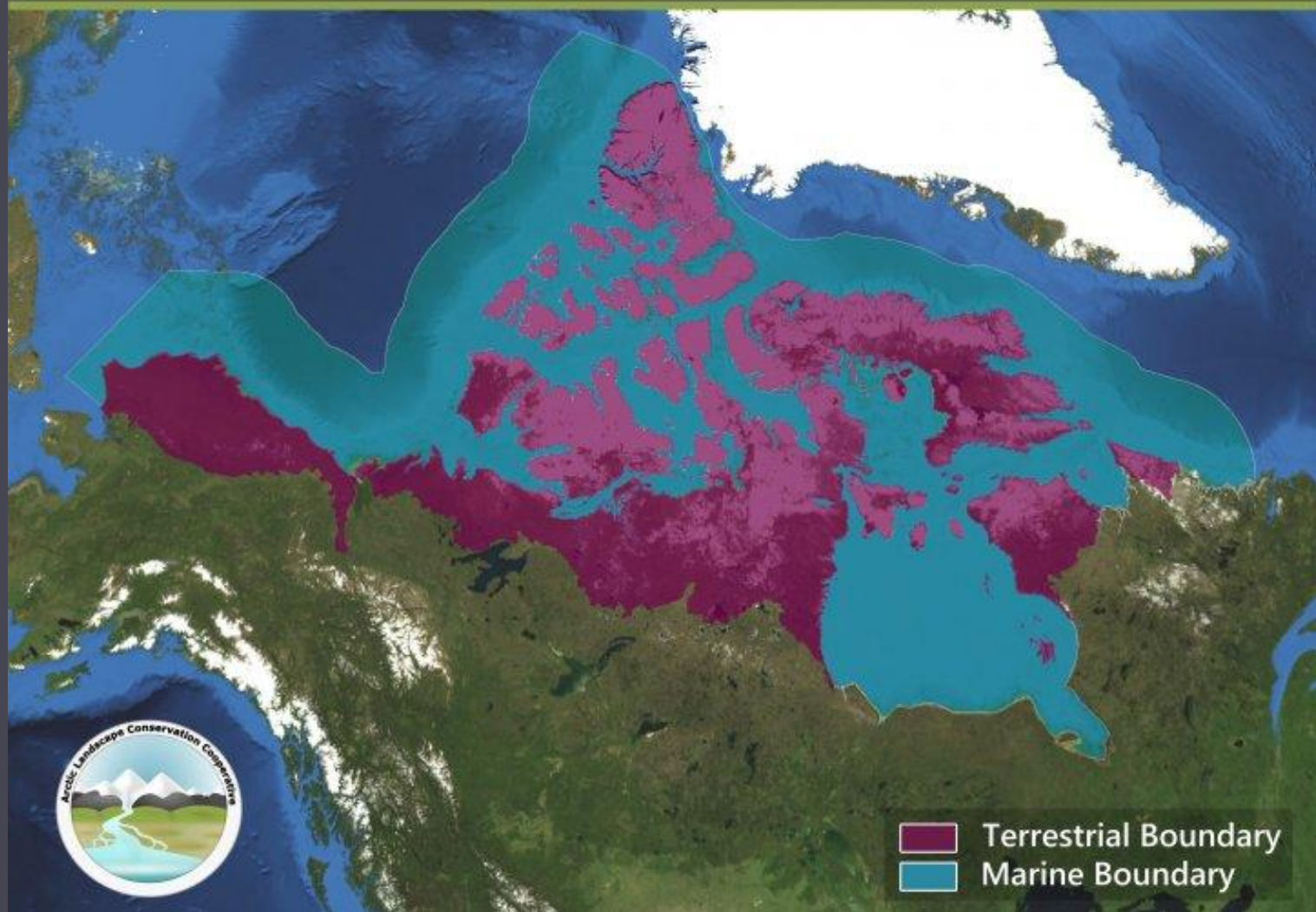
# LCC Support

- Three tiers of LCC funding in FY12:
  - Arctic LCC - \$2.2 million
  - Western Alaska LCC - \$1.2 million
  - North Pacific LCC - \$1.2 million
  - Northwest Boreal LCC - \$500,000
  - Aleutian and Bering Sea Islands LCC - \$500,000

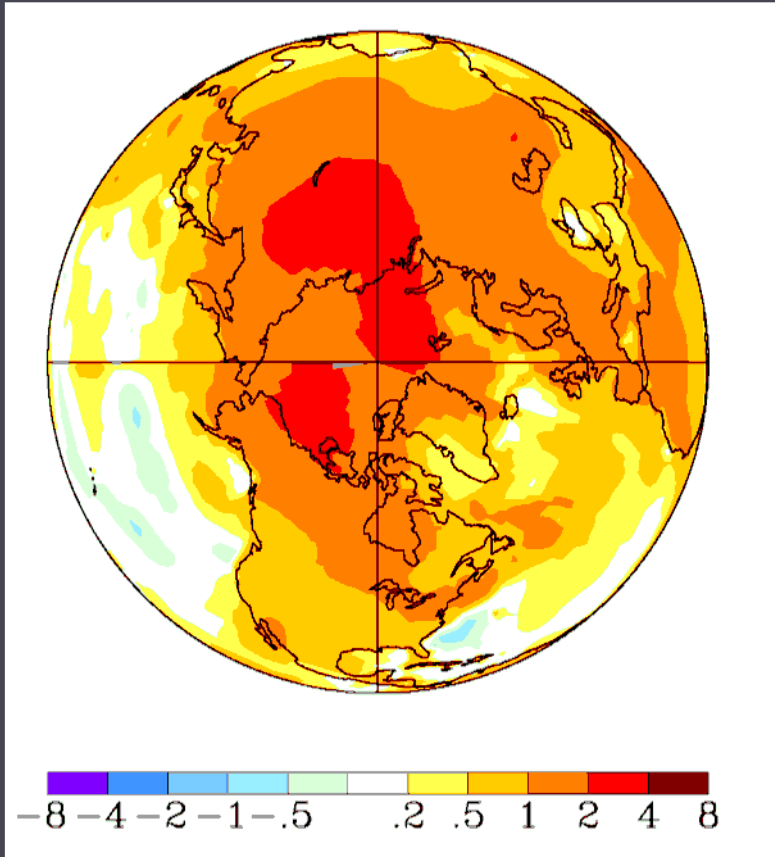


# Arctic LCC

Arctic Landscape Conservation Cooperative



# Arctic LCC



*Temperature Change, C  
1958-2008*

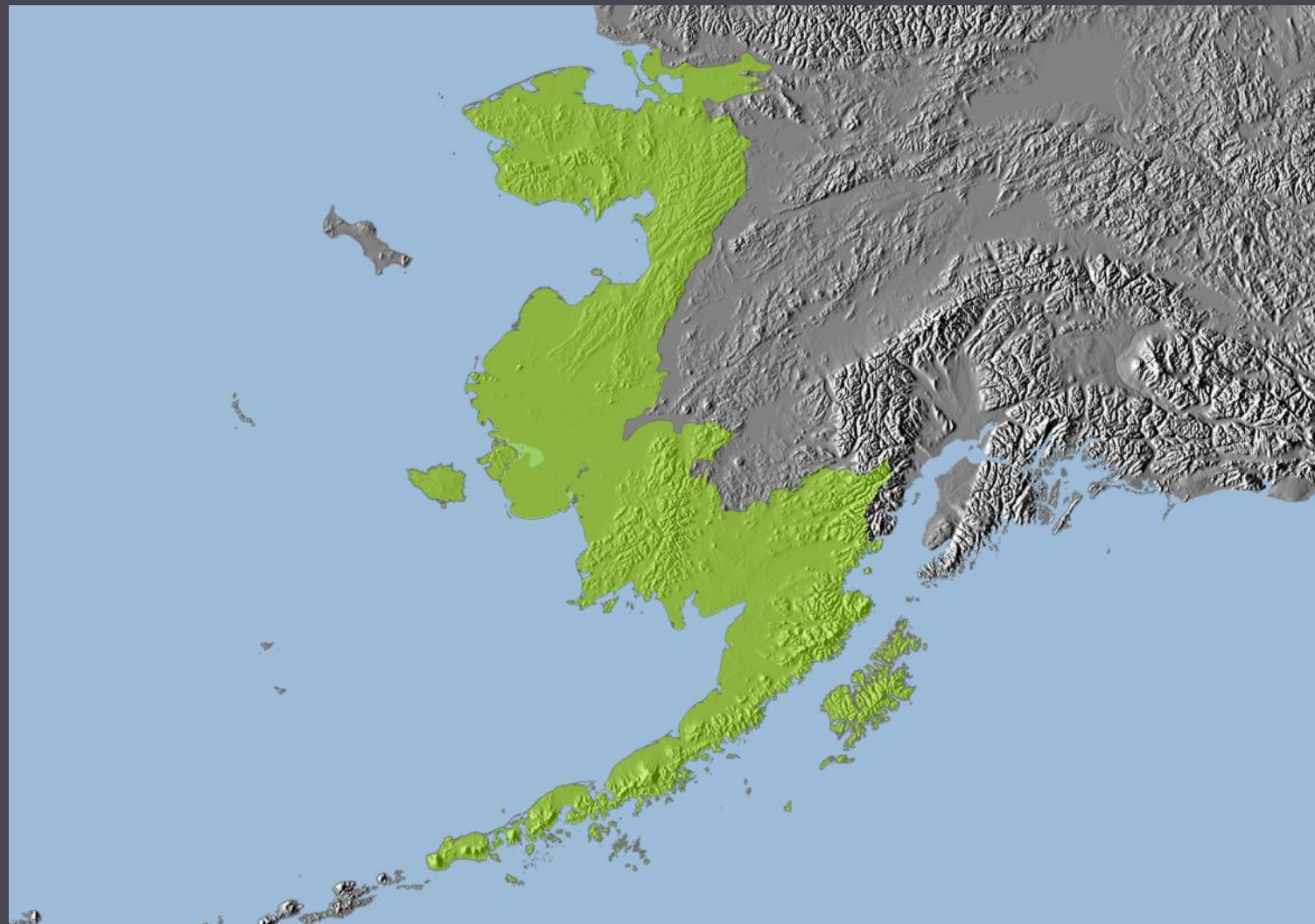
The Arctic LCC is focused on climate-driven changes on land, inland and in nearshore waters, with a focus on habitat as it affects resources in Alaska.

# Arctic LCC

## Distinctions

- 50 Ongoing Projects in the Arctic coordinated by the Arctic LCC.
- The Arctic LCC has spent \$4 million on projects from 2010-12.
- The Arctic LCC has leveraged over \$8 million to address climate-related issues in the Arctic.
- New data gathered by the Arctic LCC is not available elsewhere and is shared.

# Western Alaska LCC

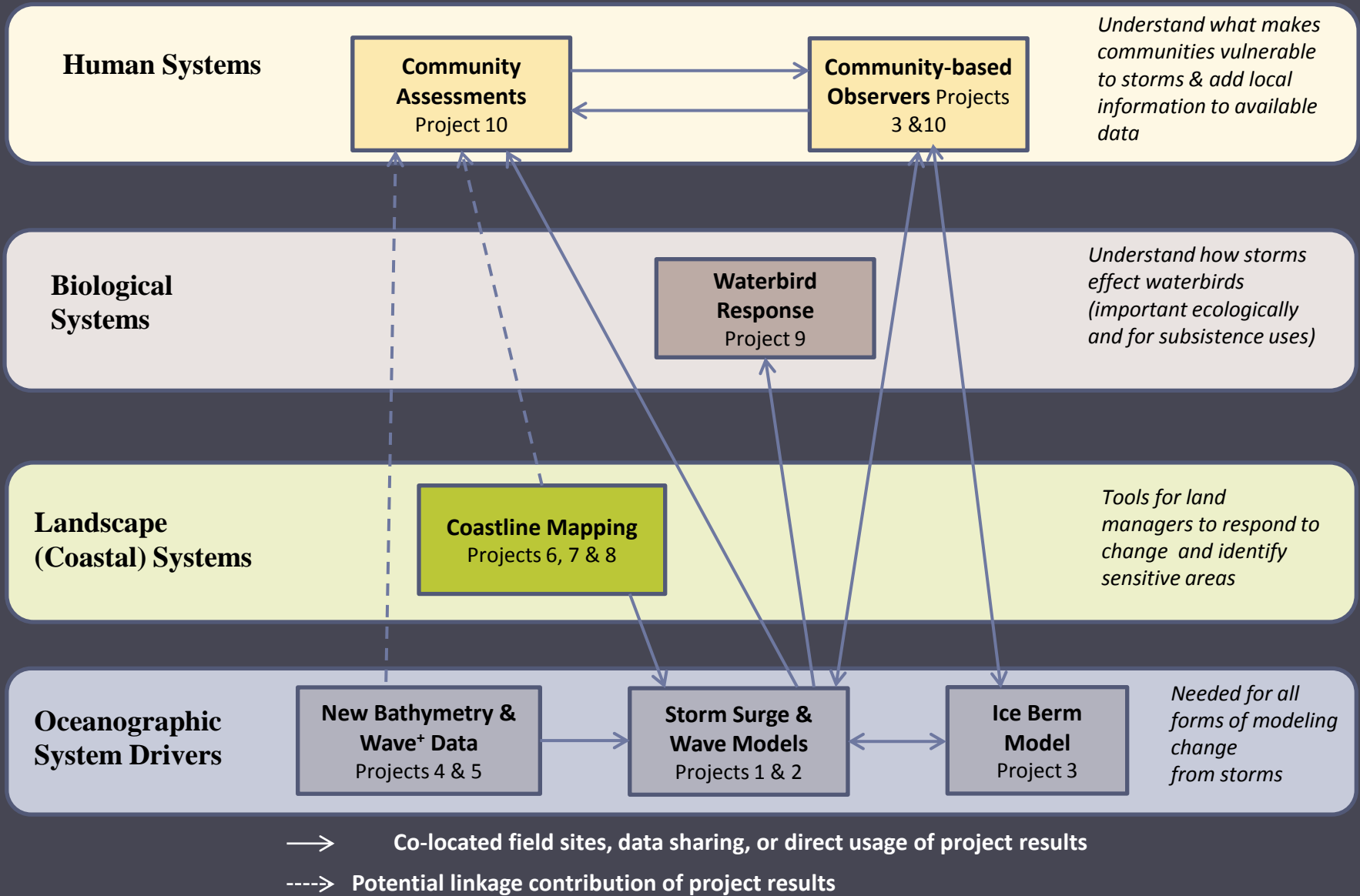


# Western Alaska LCC

## Conservation Goals

- Promote communications to enhance understanding regarding effects of climate change in Western Alaska.
- Support coordination and collaboration among partners to improve efficiencies in their common science and information activities.
- Identify and support research, and data collection, analysis, and sharing that address common information needs of land and resource management decision makers.
- Enable synthesis of information at landscape and larger spatial scales.
- Enhance resource management in western Alaska through applied science and technology transfer.

# Western Alaska LCC 2012-2013



# Aleutian and Bering Sea Islands LCC



# Aleutian and Bering Sea Islands LCC

## Mission

The ABSI LCC promotes coordination, dissemination, and development of applied science to inform conservation of natural and cultural resources in the face of climate change and other landscape-scale stressors.

- Commercial Shipping Traffic
- Invasive / Introduced Species
- Marine Contaminants /Pollutants
- Climate Variability & Change  
(including Loss of Sea Ice)
- Ocean Acidification
- Commercial Fishing



# Northwestern Interior Forest LCC (aka Northwest Boreal LCC)





# Northwest Boreal LCC

## Conservation Goals

- Promote communications to enhance understanding regarding effects of climate change and other landscape-scale stressors in the NWB region,
- Support coordination and collaboration among partners to improve efficiencies in their common science and information activities,
- Identify and support research, including data collection, analysis, and sharing that address common information needs of land and resource management decision makers,
- Enable synthesis of information at landscape and larger spatial scales,
- Enhance resource management in the NWB region through applied science, analytical tools, data management, and information transfer.



## North Pacific Landscape Conservation Cooperative

The North Pacific Landscape Conservation Cooperative is comprised of approximately 200,000 square miles (530,000 square kilometers) in six states or provinces. Public lands make up approximately 139,000 square miles (361,000 sq km) of the NPLCC, with 82,000 square miles (212,000 sq km) of Federal lands in the U.S. portion of the NPLCC, and 77,000 square miles (200,000 sq km) of Crown lands in the Canadian portion of the NPLCC.

### Coastline

State/Province	Miles	Kilometers
Alaska	15,000	24,100
British Columbia	18,300	29,500
Washington	3,000	4,800
Oregon	1,400	2,250
California	500	800

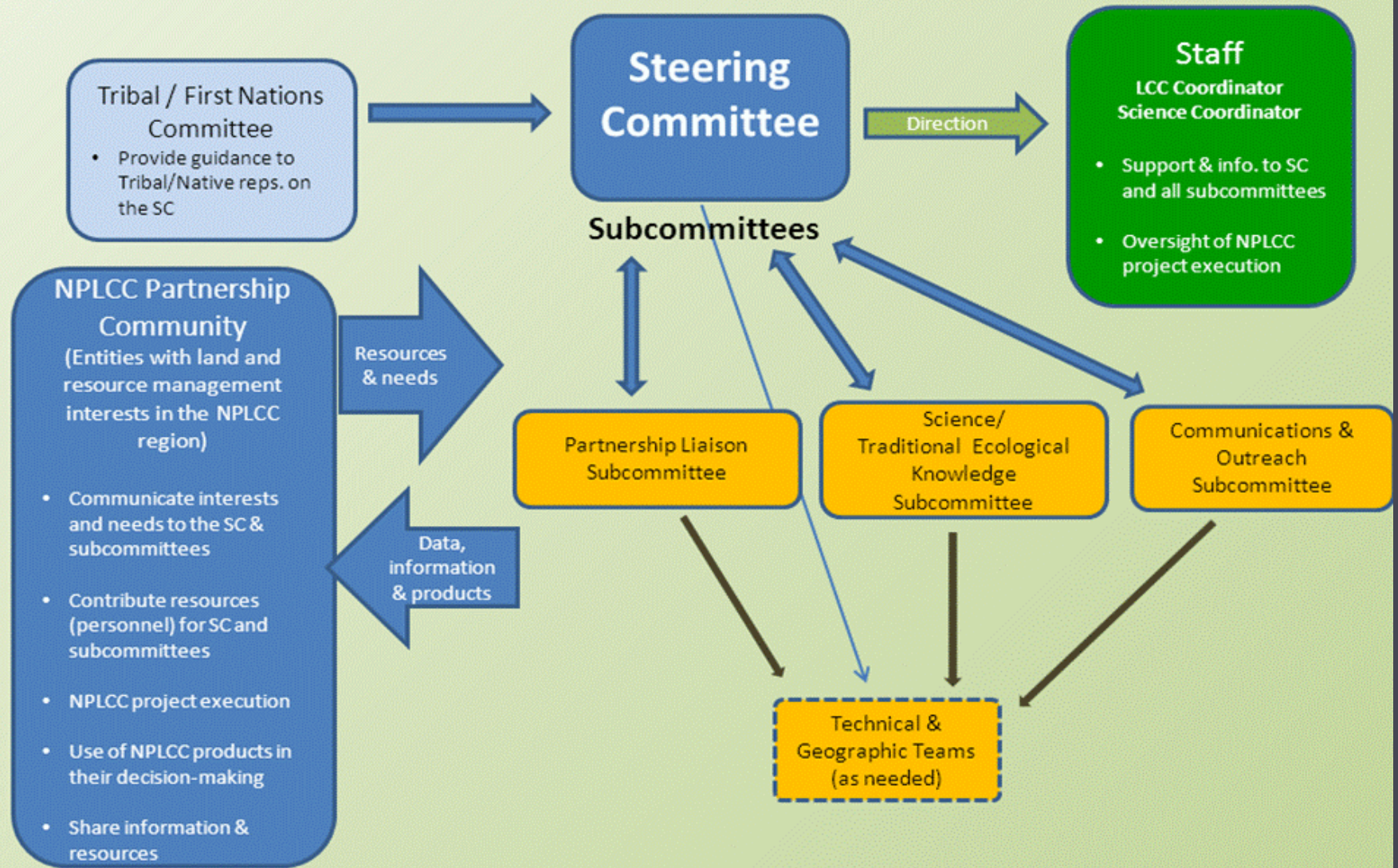
### Area

State/Province	Sq. Miles	Sq. Kilometers
Alaska	54,500	141,500
Yukon Territory	1,600	4,100
British Columbia	76,600	198,400
Washington	20,200	52,300
Oregon	31,600	81,800
California	17,600	45,600



0 15 30 45 60 90 120  
Miles / Km  
0 25 50 100 150 200

# North Pacific Landscape Conservation Cooperative



# LCC Contacts for Mat-Su

## Northwestern Interior Forest

- - John DeLapp – Coordinator
    - [john\\_delapp@fws.gov](mailto:john_delapp@fws.gov)
    - 907-786-3694
  
  - Amanda Robertson - Science Coordinator
    - [amanda\\_robertson@fws.gov](mailto:amanda_robertson@fws.gov)
    - 907-456-0445