



Matanuska-Susitna Basin Salmon Habitat Partnership Spring 2012

*The Matanuska-Susitna Basin Salmon Habitat Partnership is a broad-based, cooperative effort to better steward our salmon resources while maintaining economic prosperity.
Our vision – thriving fish, healthy habitats, and vital communities in the Mat-Su Basin.*

Welcome New Steering Committee Member

Laura Allen, District Manager of the Upper Susitna Soil and Water Conservation District (USSWCD), is the newest member of the Partnership's Steering Committee. Originally from Pelican, Alaska, Laura has an interesting work history ranging from work with Montana Fish and Game on brook and rainbow trout, to fisheries work in the Bering Sea, to spending 4 years teaching field science to local youth in Costa Rica and Ecuador - all in Spanish!

This is her 3rd year leading the USSWCD team in Talkeetna, where they are working on a range of projects and initiatives, including Youth Conservation Corps (YCC) programming. Through YCC, local teens gain summer employment, and valuable skills through experience building trails, working on shoreline restoration to improve salmon spawning habitat, identification and removal of invasive weeds, and much more.



The Conservation District concept was created during the 'dust bowl' era of the 1930's, in response to national concern over mounting erosion, floods, and the sky-blackening dust storms that swept across the country. In an effort to maintain our most basic needs of food to eat and clean water to drink, every state in the

Country was mandated to have conservation districts. Today, Alaska has a total of 11 districts with 3 in the Mat-Su Basin.

Learn more about the USSWCD at www.usswcd.org

Top Marks

The National Fish Habitat Partnership (NFHP) finished a test-drive of a new partnership evaluation process, and the Mat-Su Salmon Partnership scored in the top 3 of the 17 recognized partnerships in the country. The evaluation looked at strategic focus, use of NFHP funds to meet priorities, reliance on good science, partner engagement, and collaboration to achieve goals.

**Mat-Su
salmon**
PARTNERSHIP

The 2011 Mat-Su Salmon

Symposium was a great success! Keynote speaker David Montgomery's address, and presentations are found at: conserveonline.org/workspaces/matsusalmonsymposium



Save the Date!

The **2012 Mat-Su Salmon Symposium** is scheduled for **November 7 & 8th, 2012**, in Wasilla.

Is there a keynote speaker you'd like to hear at the symposium?

Contact: matsusalmon@tnc.org

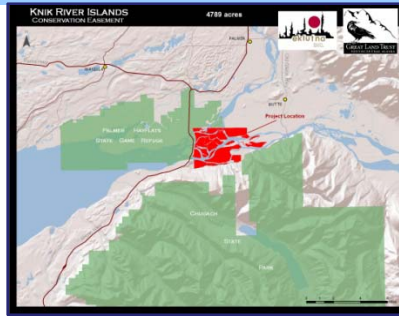
National Fish Happenings

- **WANTED!** NFHP funded project stories that illustrate the good work that's making an impact through salmon partnerships. Stories will be news on the NFHP website, as well as Facebook. Contact: Ryan Roberts rroberts@fishwildlife.org.
- A Memorandum of Understanding on Implementing the National Fish Habitat Action Plan, was signed in early March, by the Secretaries of the Interior, Commerce, and Agriculture.

www.fishhabitat.org

Great Land Trust

This winter, Great Land Trust and Eklutna, Inc. completed a conservation easement conserving 4,800 acres at the confluence of the Knik and Matanuska Rivers. Located directly upstream of the Knik River Bridge on the Glenn Highway, the property contains excellent habitat for all five species of salmon and is adjacent to the Palmer Hay Flats State Game Refuge and Chugach State Park. This is GLT's largest conservation project in terms of acreage to date. The lands will remain under the ownership of Eklutna, Inc. and traditional uses such as hunting and fishing by shareholders and permittees will continue. *For more information:* www.greatlandtrust.org



Mat-Su Salmon Partners

+ Steering Committee member

AK Dept of Commerce, Community & Economic Development
AK Dept of Environmental Conservation
+ AK Dept of Fish & Game
AK Dept of Natural Resources
AK Dept of Transportation & Public Facilities
Alaska Center for the Environment
Alaska Outdoor Council
Alaska Pacific University
Alaska Railroad Corporation
Alaskans for Palmer Hay Flats
AlaskaChem Engineering
+ Aquatic Restoration & Research Institute
Bureau of Land Management
Butte Area Residents Civic Organization
+ Chickaloon Village Traditional Council
City of Palmer
ConocoPhillips Alaska, Inc.
Cook Inlet Aquaculture Association
Cook Inletkeeper
Environmental Protection Agency
Fishtale River Guides
Friends of Mat-Su
Glacier Ridge Properties
+ Great Land Trust
HDR Alaska, Inc.
Knik River Watershed Group
Matanuska River Watershed Coalition
Mat-Su Anglers
Mat-Su Conservation Services
Montana Creek Campground
+ Matanuska-Susitna Borough
+ National Marine Fisheries Service
National Park Service
Native Village of Eklutna
Natural Resources Conservation Service
Palmer Soil & Water Conservation District
Sierra Club
The Conservation Fund
+ The Nature Conservancy
The Wildlifers
Three Parameters Plus
+ Upper Susitna SWCD
US Army Corps of Engineers
US Environmental Protection Agency
+ US Fish & Wildlife Service
US Geological Survey
USDA Forest Service
Wasilla Soil & Water Conservation District

Mapping for Wise Management

- The Mat-Su Borough has been focused on a strategy for improved wetland management. They've been mapping wetland locations, assessing their primary functions, and creating a planning document to increase awareness and to provide recommendations to reduce wetland impacts. Find out more at: wetlands.matsugov.us
- Great progress has been made on the Mat-Su LiDAR and Imagery project over the past 6 months. The Borough will be announcing its plan for data distribution in the very near future. To receive email updates on project status and data availability, contact Heather.Kelley@matsugov.us

Announcements

- The Salmon Partnership hosted a workshop on preparing study requests for the Susitna-Watana Hydroelectric Project Integrated Licensing Process. Expertise was provided by the Hydropower Reform Coalition from the lower 48.
- Extremely invasive aquarium plant "Elodea" has been confirmed in AK. Find out more at: www.fairbanksweeds.org
- The Mat-Su Salmon Passage Improvement Plan is done! Thanks to the Salmon Passage Working Group for all their hard work. Find out more at: conserveonline.org/workspaces/MatSuSalmon



Got Ideas? Want to Join? Contact:

Jeff Davis, ARRI
Jessica Winnestaffer, Chickaloon Village
Laura Allen, Upper Susitna SWCD

Frankie Barker, Mat-Su Borough
Jeanne Hanson, NOAA Fisheries
Bill Rice, US Fish & Wildlife Service

Sue Rodman, AKDF&G
Kim Sollien, GLT
Corinne Smith, TNC